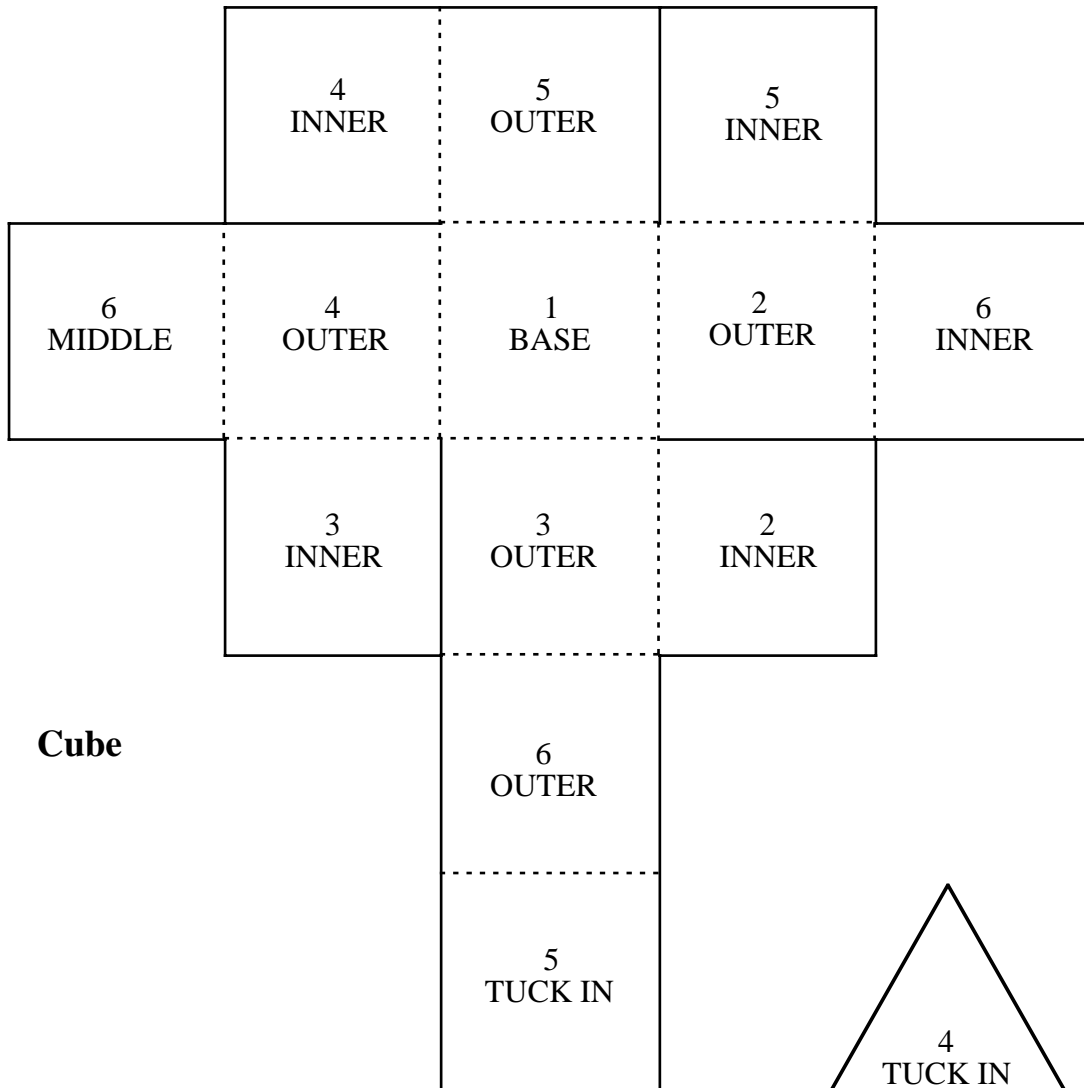
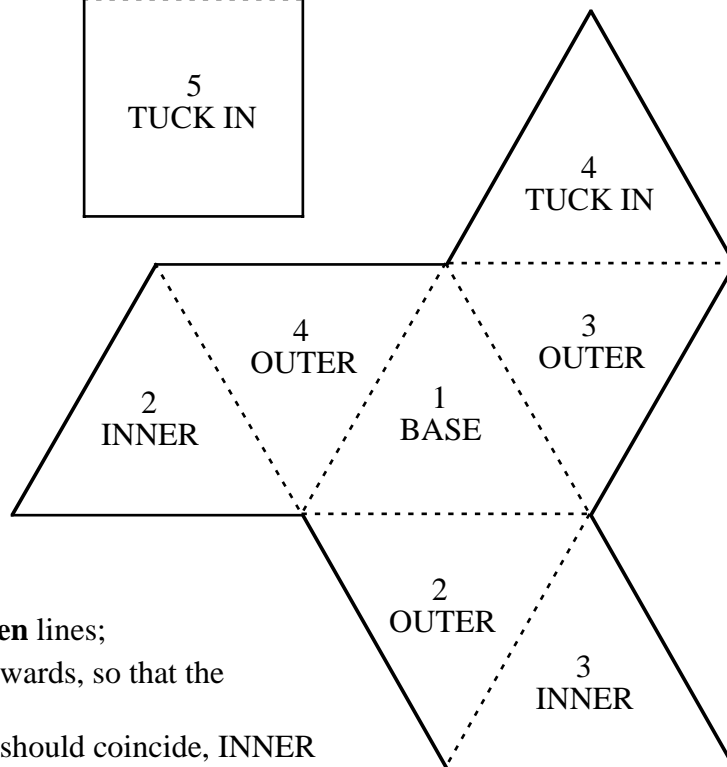


PATTERNS FOR CUBE AND TETRAHEDRON



Cube



Tetrahedron

To make the models:

- (1) **Cut** along **solid** lines;
- (2) **Crease** upwards along **broken** lines;
- (3) Starting at '1 BASE' fold upwards, so that the writing is inside the model;
- (4) Faces with the same number should coincide, INNER inside OUTER;
- (5) Finish by tucking in face labelled "TUCK IN".